



**Gross Power**  
100 HP (74.5 kW) / 2,200 rpm

**Net Power**  
95 HP (71 kW) / 2,200 rpm

**Bucket Capacity**  
Backhoe 0.1 ~ 0.3 m<sup>3</sup>  
Loader 0.8 ~ 1.0 m<sup>3</sup>

**Operating Weight**  
7,440 kg (16,402 lb)

# H940c

With Tier II / Stage II Engine installed



\* Photo may include optional equipment.

ENGINE	
Maker / Model	Perkins / 1104C-44T
Type	4-stroke, water cooled turbocharged.
Non-road emission standards	Certified to EPA Tier II / EU stage II
Displacement	4.4 ℓ
Fuel	Diesel
Horsepower	Gross 100 hp (74.5 kW) @ 2,200 rpm
	Net 95 hp (71 kW) @ 2,200 rpm
Maximum torque	42 kg-m @ 1,350 rpm

HYDRAULIC SYSTEM	
System type	Open center
Pump type	Tandem gear pump
Pump flow	138.4 L/min (Steering + Attachment)
System Pressure	250 kg/cm <sup>2</sup>
Loader valve	- Mechanical control (Standard) : 1 Lever - Pilot control (Option) : 1 Joystick, Boom float, Bucket return to dig
Backhoe valve	- Mechanical control (Standard) : 2 Levers - Pilot control (Option) : 2 Joysticks Pilot control (Excavator ISO control pattern is standard) Optional pattern change valve for excavator (ISO) control pattern Backhoe (SAE) control pattern
Stabilizer Control	- Mechanical Control (Standard) : 2 Levers - Pilot Control (Option) : 2 small levers - Stabilizer Safety lock valve (Standard)

ELECTRICAL	
Voltage	12 volts
Alternator	100 amp
Battery	850 CCA (Standard) = 1EA

OPERATING WEIGHTS	
Standard configuration	2WD, GP bucket (0.8m <sup>3</sup> ), counter weight (350kg), ROPS/FOPS canopy, mono dipper 7,440 kg
Optional configuration	4WD, MP bucket (1.0m <sup>3</sup> ), counter weight (150kg), ROPS/FOPS cabin, ext. dipper 8,230 kg
Add-on weight	Counter weight 550 kg
	Drive shaft & T/M under guard 55 kg
	Fork 170 kg

TIRES	
Front	STD 11L-16SL,12PR (2WD)
	OPT 12.5/80-18,12PR (4WD)
Rear	STD 19.5-24,12PR
	OPT 16.9-28,12PR



Sales Executive:

60-64 Industrial Site, Beterverwagting, East Coast Demerara, Guyana  
Tel: +592 220 0930 ext 304, 305  
E-mail: amsalesgy@ansamcal.com

SERVICE REFILL CAPACITIES	
Fuel tank	127 ℓ
Engine coolant water	19 ℓ
Engine oil with filter	8 ℓ
Hyd. tank with filter	50 ℓ
Hyd. system total	93 ℓ
Transmission and torque converter	18 ℓ
Front axle (4WD)	8 ℓ
Rear axle	16 ℓ

BACKHOE ATTACHMENTS	
Buckets	0.2m <sup>3</sup> (STD)
	0.17m <sup>3</sup>
	0.26m <sup>3</sup>
Boom	2.63m (STD)
	2.81m
Arm	2.0m (STD)
	2.0m ~ 3.12m

LOADER BUCKETS			
Capacity	Remark	Capacity	Remark
0.8 m <sup>3</sup>	GP BOCE (STD)	0.9 m <sup>3</sup>	GP Tooth
1.0 m <sup>3</sup>	GP BOCE	1.0 m <sup>3</sup>	MP
0.7 m <sup>3</sup>	GP Tooth	1.0 m <sup>3</sup>	MP with Fork

\*GP : General Purpose, MP : Multi Purpose  
\*BOCE : Bolt on Cutting Edge

COUNTER WEIGHT	
Description	Weight
None, Guard Front	10 kg
Casting, Additional	150 kg
Casting (STD)	350 kg
Casting Additional for Telescopic Arm	550 kg

POWERTRAIN				
Transmission	4-speed helical-cut gears, full powershift standard; electric clutch cutoff on loader lever			
Maximum travel speed with standard tire				
H940C	Gear 1	Gear 2	Gear 3	Gear 4
Forward (km/hr)	5.2	9.6	19.4	34.0
Reverse (km/hr) (Option)	6.6	12.0	(19.0)	N/A
Torque converter	Single stage, dual phase			
Differential	Hydraulic locking rear Push-button activation			
Steering (Option)	Hydrostatic power (emergency steering)			
Brake	Service	Power assisted, hydraulic wet disc, mounted inboard, self-adjusting and self-equalizing		
	Parking	Spring-applied, hydraulically releases, wet, multi disc independent of service brakes with electric switch control		



### Powerful and Reliable Engine

A powerful Perkins Mechanical engine with EPA Tier II and E.U. stage II emissions compliance, 4 cylinder, 4 cycle, turbo-charged, is built for power, reliability, efficiency.

### Axle and Brakes

Front & rear axles are designed for heavy duty to withstand the challenging Jobsite conditions. Outboard, planetary gears improve serviceability while multi wet disc type brakes eliminate possible external contamination.

The parking brake can be easily activated from within the cab by the push of an electric switch.



### Excellent Backhoe Performance

The backhoe is inherently strong design, perfect for heavy duty applications. The boom allows good visibility into the trench when the operator is digging around buried obstructions such as water mains, sewer pipes, utility lines, etc.

Pilot controls(option) improve operator control and precision when excavating. And an extendable dipper as an option significantly increases the machine's versatility.

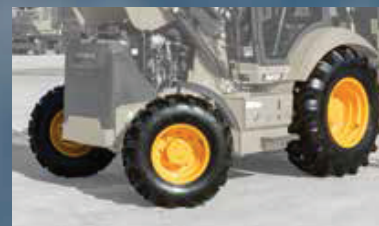


### Work Lights

Standard two front & two rear-adjustable 55 watt halogen work lights and optional four front & four rear-adjustable 55 watt halogen work lights provide excellent illumination at the work area.

### Four Wheel Drive Option

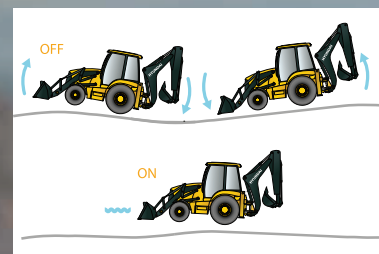
Four wheel drive system improves mobility and loader performance in ground conditions underfoot and can be activated on-the-go.



### Ride Control System Option

Ride control system is available for improved operator comfort. Ride control reduces bounce and shock when traveling on the job site.

The system is designed to minimize loader lift bounce when traveling over rough terrain to reduce material spillage and improve travel with a full bucket. The operator can engage ride control by flipping the switch on the side console. Ride control improves job site productivity, operator comfort and overall safety.



### Powerful Loader Performance

The H940C series loader boom is integrally welded with a large diameter tube, dual lift and tilt cylinders for maximum strength and power. A strong and rigid loader frame allows for greater lift capacity, improved line of sight and overall visibility.

The loader attachment can be equipped with automatic return to dig function as an option designed to reduce loading cycle times.



# OUTSTANDING PERFORMANCE

H940C series provides the operator with best performance and productivity.



\* Photo may include optional equipment.